

THE

DIXON

---

AUTOGRAPH COLLECTION®  
HOTELS

## BRIEF HISTORY

- Former Tower Bridge Magistrates court and police station
- Built between 1903-1905 by John Dixon Butler – appointed architect and surveyor for the Metropolitan police
- Grade II Listed Edwardian building, fully renovated to maintain its original features with a quirky boutique design
- Closed its doors as a court for the last time in the summer of 2013, welcoming guests as The Dixon, Tower Bridge in December 2018



MARRIOTT  
**BONVOY**<sup>™</sup>



THE  
**DIXON**

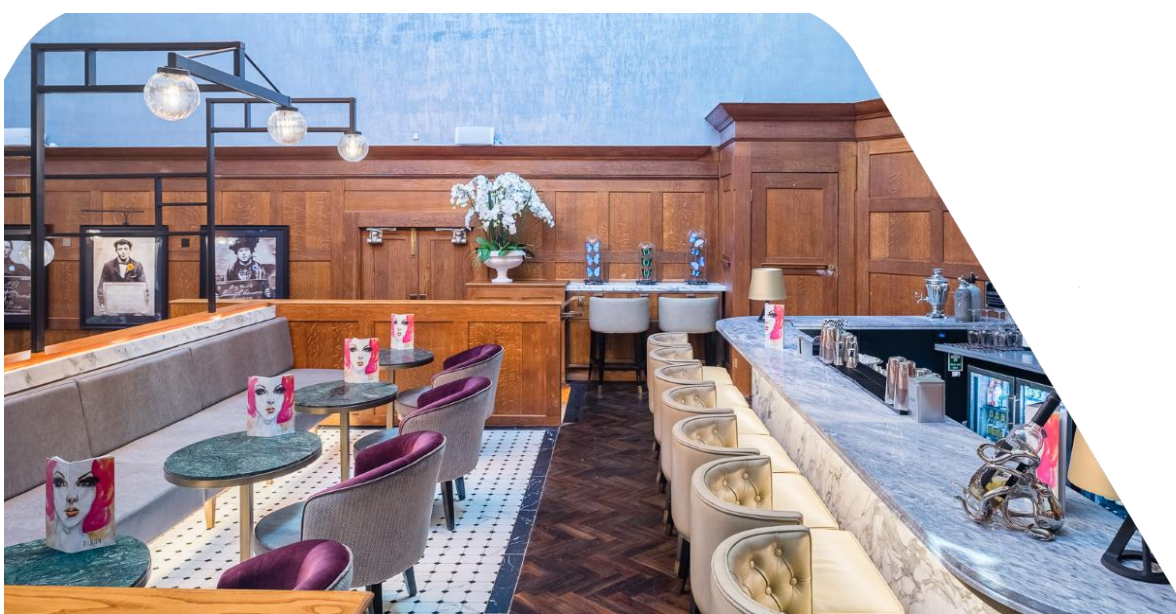
# PROVISIONERS

- 22 former cells for inmates awaiting court occupied the space – 2 reconditioned cells with terrazzo flooring outlining the once occupied cells
- Pizza, pasta, prosecco theme for lunch and dinner
- Locally sourced produce – breakfast, brunch, lunch and dinner
- Seating for 88 persons, including our semi-private Studio 54 ideal for 10-person meetings or dining



## SHAKEDOWN CAFÉ

- Ideal for evening Networking events
- Seating for additional 21 guests; standing 35 guests
- Marriott Autograph Collection – Mark
- Shakedown Coffee “brewed behind bars”



## COURTROOM BAR

- A former courtroom
- Total seating of 50 guests
- Flexible Breakout space
- Semi-private seating for up to 30 guests
- Chandelier with 193 lights representing the number of hotel bedrooms
- Speciality – Espresso Martini with Dixon's coffee blend
- Ideal for exclusive networking events.



# THE DIXON GUESTROOM

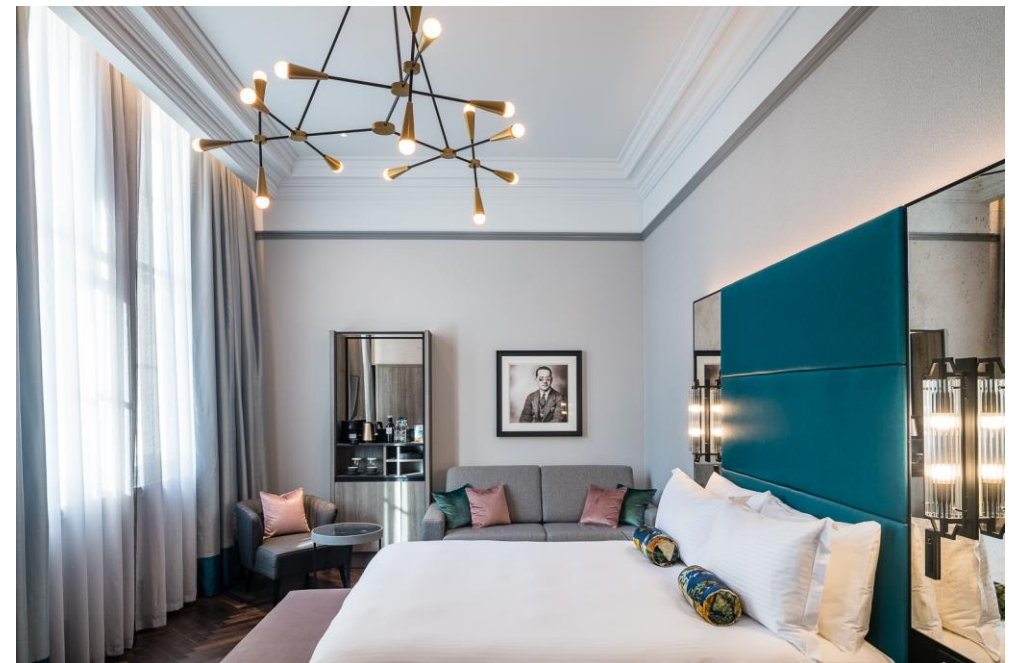


- 121 Dixon guestrooms: 20 – 24 square meters, including 35 Twin rooms.
- Large modern bathroom with walk-in showers
- Murdock amenities
- 49" Samsung Flat-screen televisions with Chrome cast
- Nespresso Machine with Dixon's unique coffee capsules

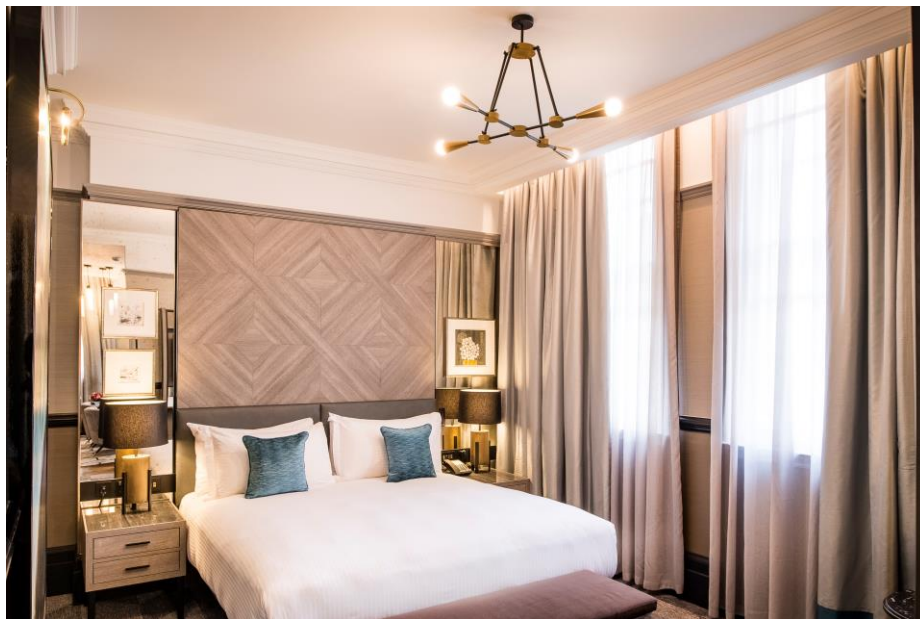
# SUPERIOR, EXECUTIVE AND SUITES



- 25 – 43 square meters
- Large modern bathroom with walk-in showers
- Murdock amenities
- Bathrobe & slippers
- 49" Samsung Flat-screen televisions with Chrome cast
- Nespresso Machine with Dixon's unique coffee capsules



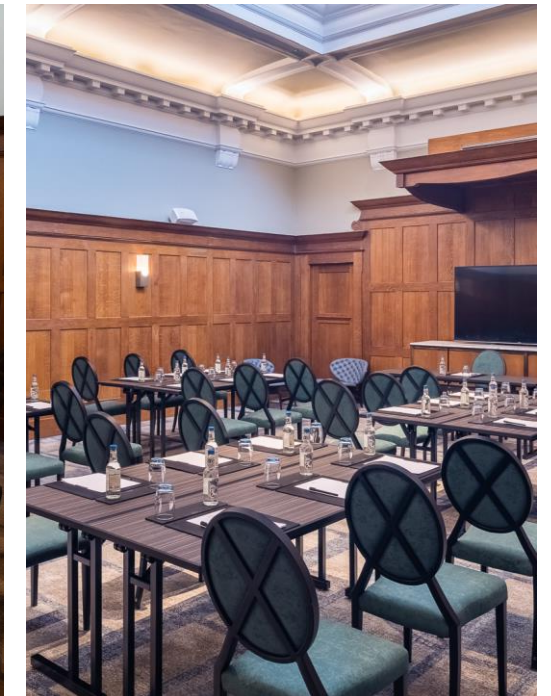
# THE ORWELL SUITE



- 63 square meters
- Walk-in wardrobe, including bathrobe and slippers
- Large modern bathroom with bath and separate shower, with Murdock amenities
- 2 x 49" Samsung Flat-screen televisions with Chrome cast
- View of The Shard.
- KitchenAid with Dixon's unique coffee capsules



# MEETING & EVENTS



# THE CHAMBERS

- 73 square meters
- Natural daylight and original features
- Max capacity 50 people theatre style
- A former courtroom
- Private dining for 36 pax
- Equipped with modern click share technology, flip chart, microphone, camera, speakers and a 75" smart LCD television



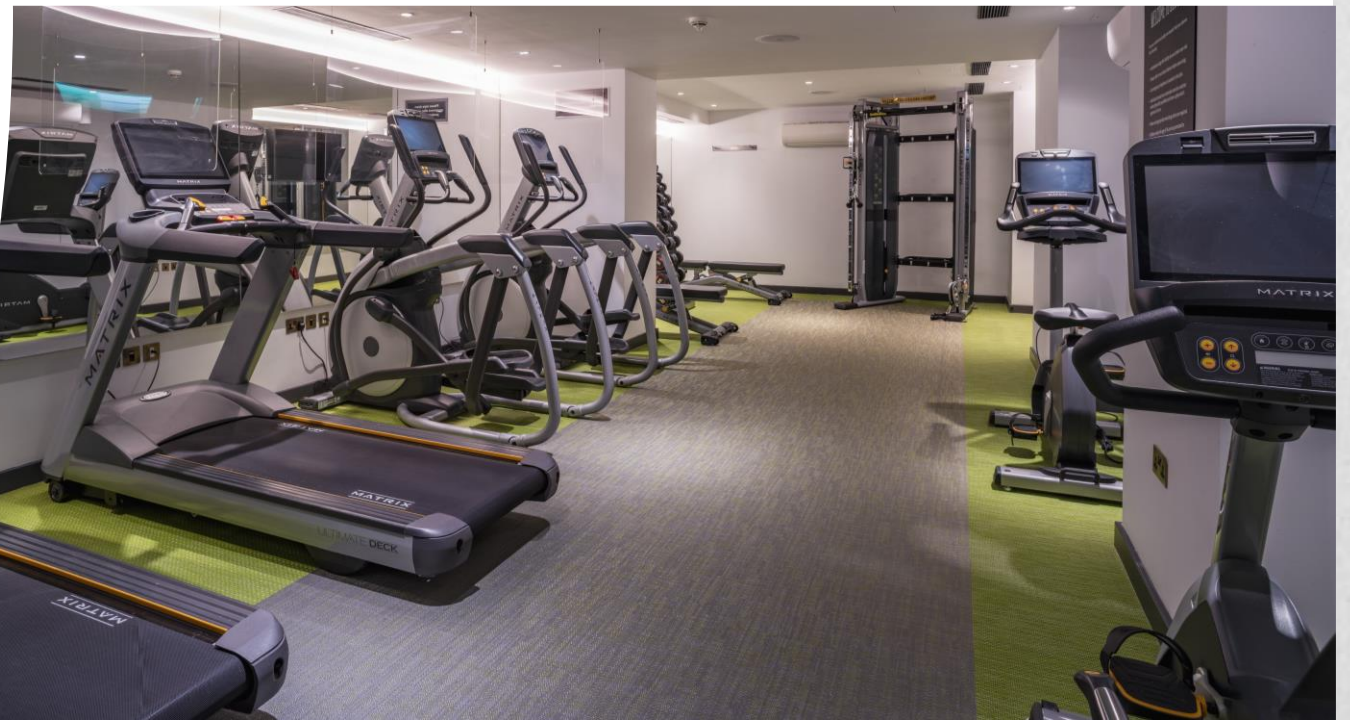
## THE DOCK

- 29 square meters
- Natural daylight and original features
- Max capacity 12 people boardroom set up
- Nespresso coffee machine with Dixon's unique coffee blend
- Executive boardroom table
- Access via an original staircase that led prisoners from the cells to the courtroom
- Equipped with modern click share technology, flip chart, microphone and a 65" smart LCD television



## FITNESS CENTRE

- Accessible 24/7 by The Dixon residents only
- State-of-the-art Matrix equipment
- Two of each - Treadmills, Cross-trainers and Exercise bikes
- Refreshment station with towels and freshwater
- Complimentary earphones on request



# LOCATION

London Bridge Station – 0.3 Miles



Jubilee and Northern Line

National Rail services - Arrive at Gatwick Airport within 30 minutes

Tower Hill Station – 0.7 Miles

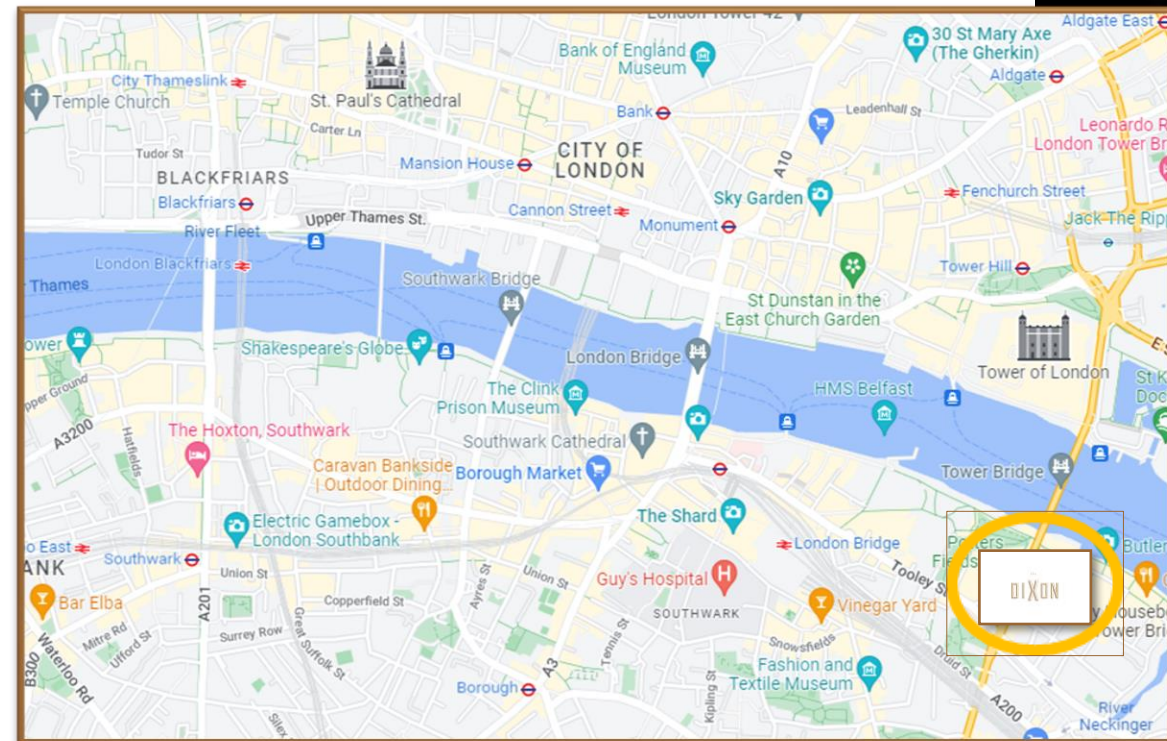


District and Circle line



Docklands Light Railway (DLR)

Great Northern Southern Thameslink



Fast connections to Gatwick Airport (35 minutes), Heathrow (45 minutes), City Airport (29 minutes),  
The City, ExCel and Canary Wharf

## CONTACT

## ENQUIRIES:

**Paulina De Oliveira**

M&E Sales and Reservations Executive

e: [sales@thedixon.co.uk](mailto:sales@thedixon.co.uk)

l: +44 (0)203 959 2908

**Yanal Tarazi**

Cluster Director of Sales

e: [salesdirector@thedixon.co.uk](mailto:salesdirector@thedixon.co.uk)

m: +44 (0)7435 110024

l: +44 (0)203 959 2904

[Click here to visit our website](#)